

Installation and Startup Guide

For DataPage+ 2013

Last Updated: September 9, 2013

Table of Contents

Installing Prerequisite Components	1
Overview.....	1
Step 1: Run Setup.exe and Start the Wizard	1
Step 2: Accept License Agreements.....	2
Installing the DataPage+ Software.....	5
Overview.....	5
Step 1: Start the Wizard.....	5
Step 2: End-User License Agreement	6
Step 3: Choose Setup Type.....	7
Step 4: Click Install	10
Step 5: Finish the Installation.....	12
Step 6: Check the Installed Contents.....	13
Program Files.....	13
Demo Database Files.....	14
Using DataPage+ for the First Time.....	15
Overview.....	15
Step 1: Start the Software.....	15
Step 2: Follow the Getting Started Guide	15
Troubleshooting the Install	17
Overview.....	17

Installing Prerequisite Components

Overview

This covers the installation of these prerequisite components:

- Microsoft .NET Framework 4
- Microsoft SQL Server 2008 Express

Step 1: Run Setup.exe and Start the Wizard

If you're installing from a CD/DVD, double-click on the main **setup.exe** (Figure 1).

If you're installing from a downloadable file, extract the contents from the downloaded archive and double-click on the **DataPagePlusSetup.exe** file there:

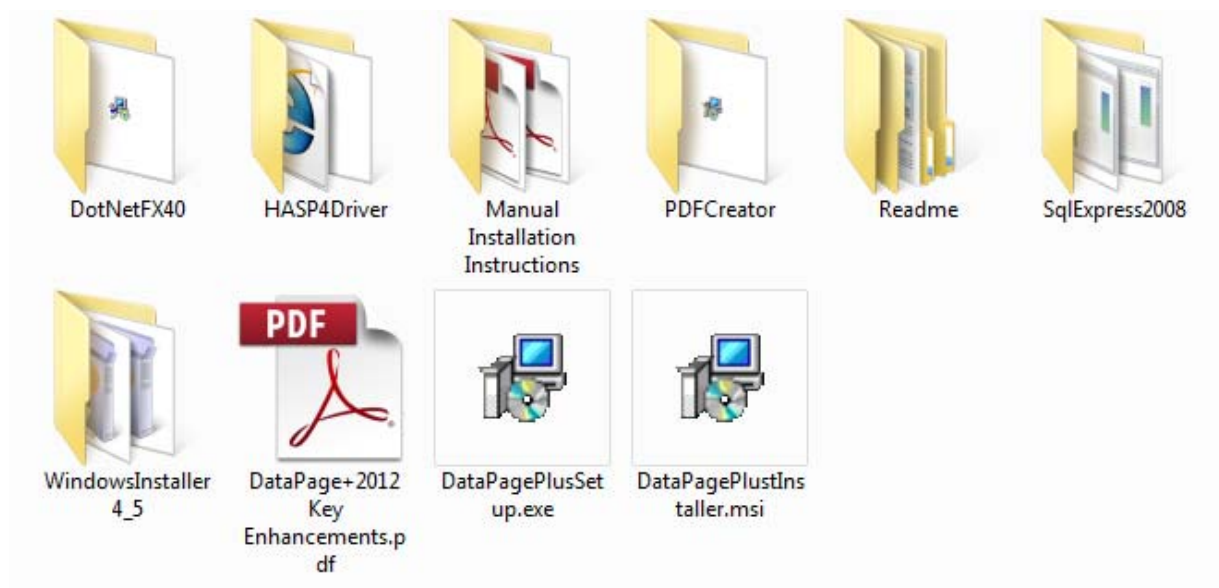


Figure 1 – The Setup.exe File

The installation wizard opens. If any of the above required components are missing, the installation package attempts to install them before installing the main DataPage+ application.

Step 2: Accept License Agreements

Accept any license agreements that appear:

- If it appears, click **Accept** for the Microsoft .NET Framework 4 component (Figure 2).
- If it appears, click **Accept** for the Microsoft SQL Server 2008 Express (Figure 3).

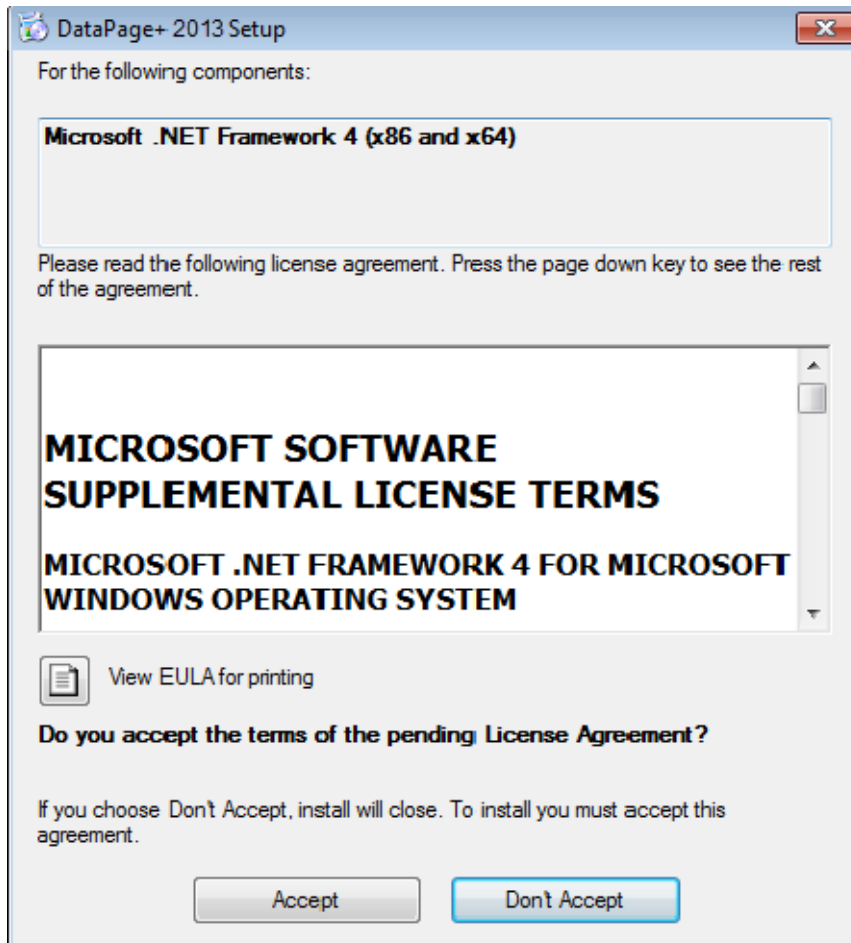


Figure 2 – The Microsoft .NET Framework 4 Pending License Agreement Acceptance

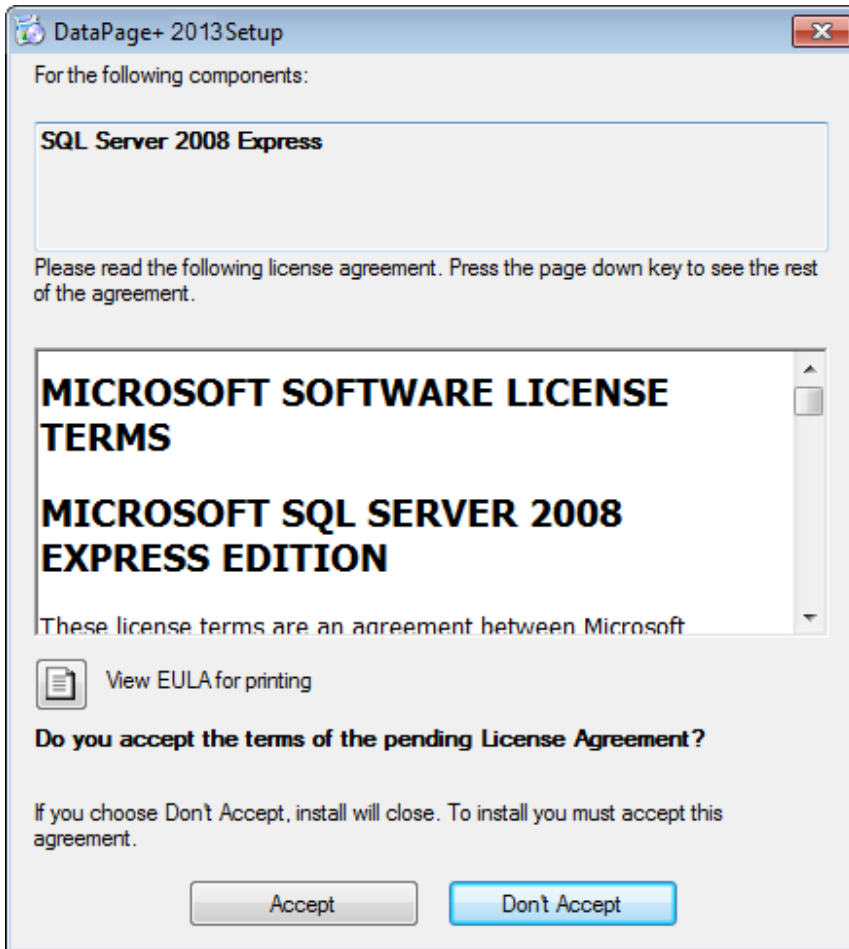
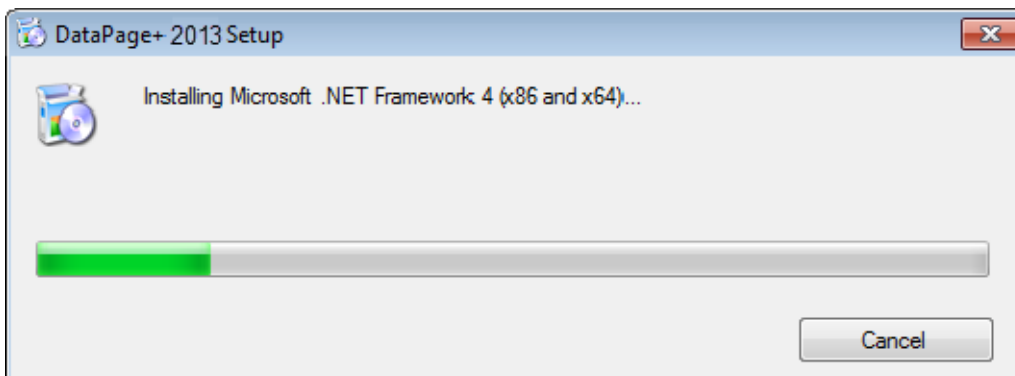
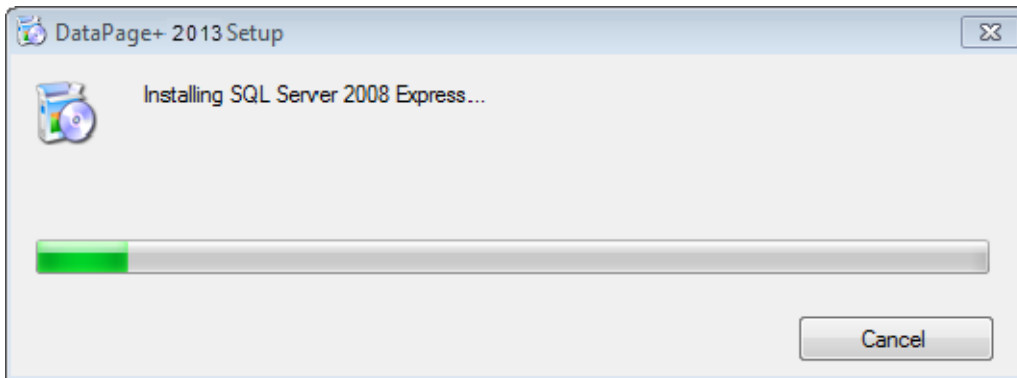


Figure 3 – The SQL Server 2008 Pending License Agreement Acceptance

A progress bar appears first for the .NET Framework 4:



Once that component has installed another progress bar appears immediately for the SQL Server 2008 Express installation:



Be patient; the installation of these required components can take several minutes.

Once the .NET Framework 4 and MS SQL Express 2008 components are installed, the installation program immediately begins the main DataPage+ installation. See "Installing the DataPage+ Software" on page 5.

Installing the DataPage+ Software

Overview

This covers installing just the DataPage+ application. The installer should have already installed the prerequisite components. See "Installing Prerequisite Components" on page 1 for more information.

Step 1: Start the Wizard

Note: If you run the setup.exe installation program and an existing version of DataPage+ already exists on your system, you have the option of repairing or removing the existing installation.

Also, if you are running the FULL installation set, this installer will install MS .NET Framework 4 and if it is missing from the current system.

Once the .NET Framework 4 and MS SQL Express 2008 components are installed, the installation program immediately begins the main DataPage+ installation.

The **DataPage+ Setup Wizard** automatically appears to guide you through this process. Fill in any boxes and select desired options. Click **Next** at each screen.

At the initial welcome screen (Figure 4), click **Next** to start the wizard:

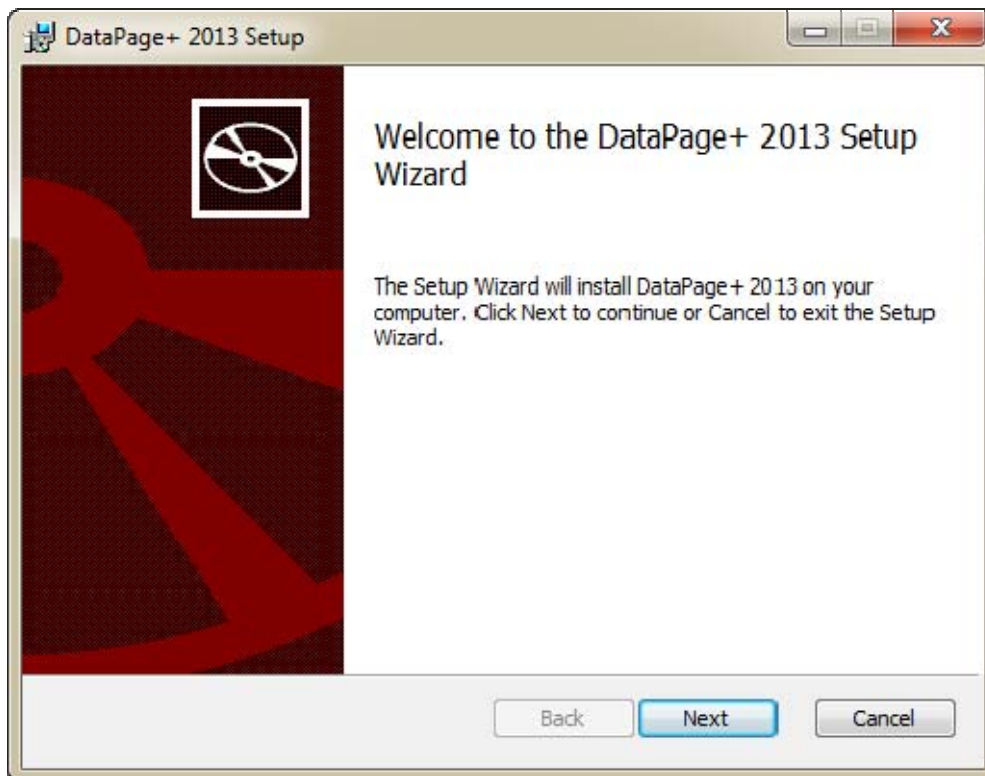


Figure 4 – Initial Welcome Screen

Step 2: End-User License Agreement

The **End-User License Agreement** screen appears (Figure 5).



Figure 5 – End-User License Agreement Screen

Read and accept the license agreement, and then click **Next**.

Step 3: Choose Setup Type

Choose a setup type from the Choose Setup Type screen (Figure 6):

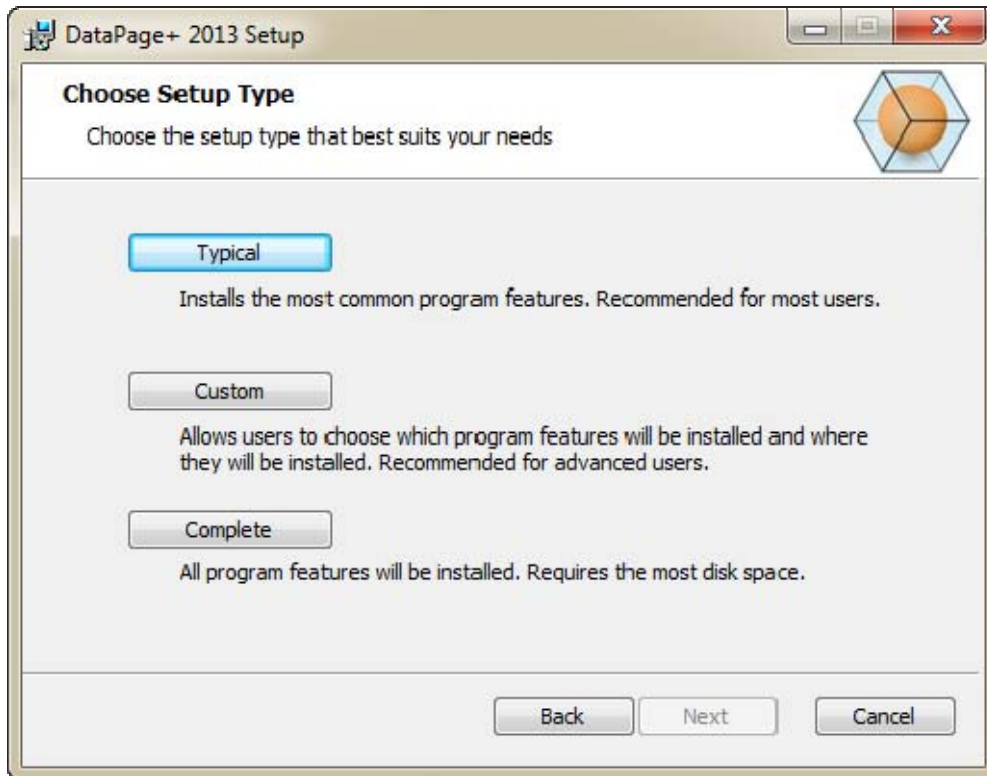


Figure 6 – Choose Setup Type Screen

Typical - This option installs the common program files to the default installation location: C:\Program Files\WAI\DataPage+ 2013 or C:\Program Files (x86)\WAI\DataPage+ 2013.

Custom - This option lets you specify what components to install as well as customize the installation location. A screen below appears (Figure 7).

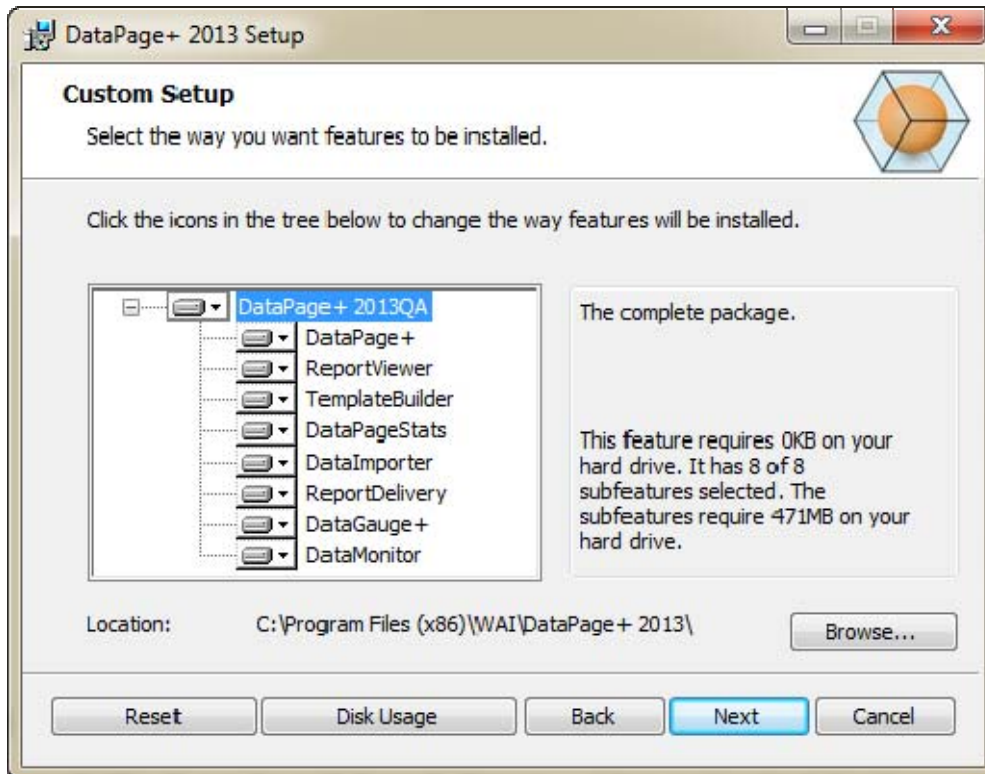



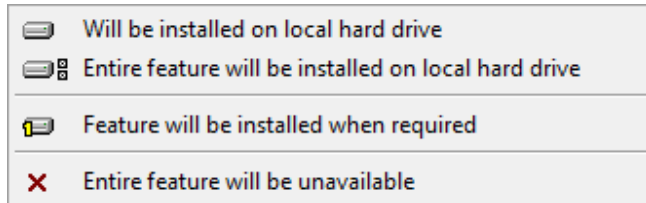
Figure 7 – Custom Setup Screen

Choose what tools you want to install:

- **DataPage+** - This installs the main DataPage+ application.
- **ReportViewer** – This installs a stand-alone report viewer to view reports that were created and saved from within DataPage+.
- **TemplateBuilder** – This installs an application to modify or create DataPage+ report templates.
- **DataPageStats** – This installs the DataPageStats.exe utility. This tool creates a new XML statistics file for DataPage+ from within a PC-DMIS part program.
- **DataImporter** – This installs the Dataimporter.exe utility. This tool monitors a specified directory on your local computer to import data of supported file types.
- **ReportDelivery** – This installs the ReportDelivery.exe utility. This tool automatically sends DataPage+ reports to a specified directory or emails them to desired recipients.
- **DataGauge+** - This installs the DataGauge+ application that can define part templates to be measured using gauges and then collect and store the measurement data in a database.
- **DataMonitor** – This installs the DataMonitor application. This tool monitors incoming data without needing to generate any reports.

Overview of Customize Installed Features

By default, all program components are selected to be included in the installation. You can use the [tree view](#) to customize when or if these features are installed. To do this, click small drop-down icon  next to the component to exclude. You'll see a drop down list.



- **Will be installed on local hard drive** - The selected feature is installed to the hard drive on your computer.
- **Entire feature will be installed on local hard drive** - The entire feature is installed to the hard drive on the computer. This means sub-features of the selected feature are also installed.
- **Feature will be installed when required** - The feature is only installed if required during the installation process. Some files are informational, and are not required for the application to run. These may include documentation or other files.
- **Entire feature will be unavailable** - This excludes the component from installation.

Customize Installation Location

By default, the program installs to this location "C:\Program Files\WAI\" or "C:\Program Files (x86)\WAI\" under the "DataPage+ 2013" directory. To change the default location, click the **Browse** button and navigate to the directory on your computer you want to hold the program files. When you click **OK**, the **Location** box changes to show the selected location.

If you ever want to reset the items to the default selection, click **Reset**.

If needed, the **Disk Usage** button displays how much space you have on your currently selected disk drive and how much space it will take to install the selected components.

Complete - This option installs all the program files to the default installation location: C:\Program Files\WAI\DataPage+ 2013 or C:\Program Files (x86)\WAI\DataPage+ 2013

Click **Next** when finished customizing the install.

Step 4: Click Install

Once the installation has all the information it needs, the **Ready to Install** screen appears (Figure 8).

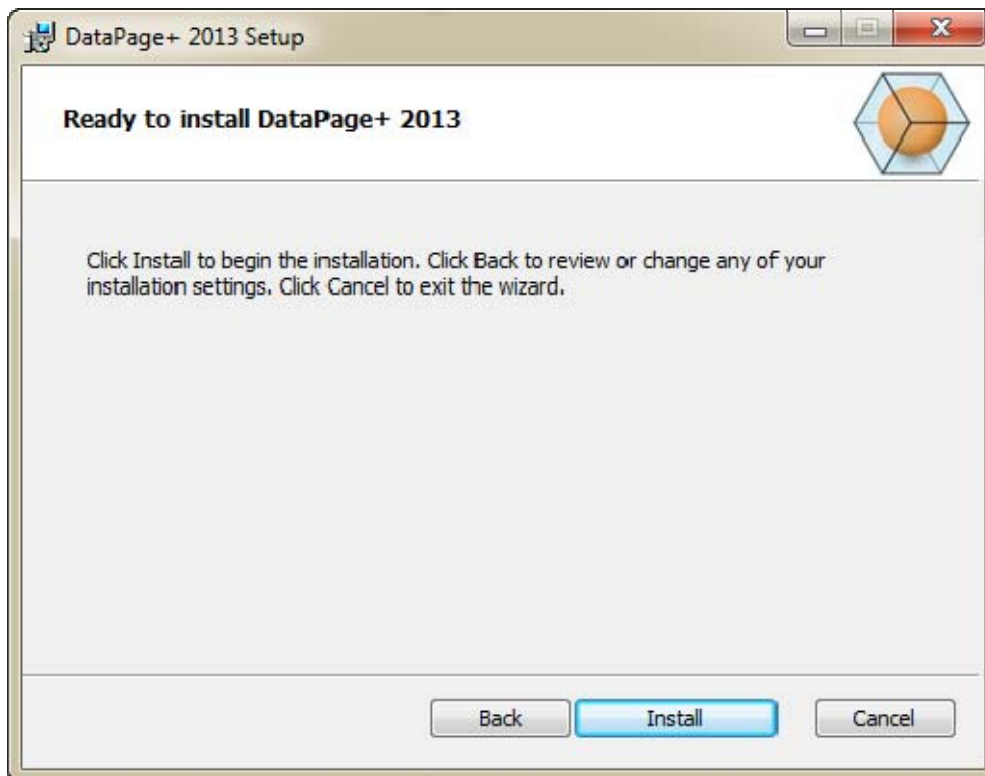


Figure 8 – Ready to install Screen

Click **Install** to start the actual installation.

The **Installing DataPage+** screen appears showing the installation progress:

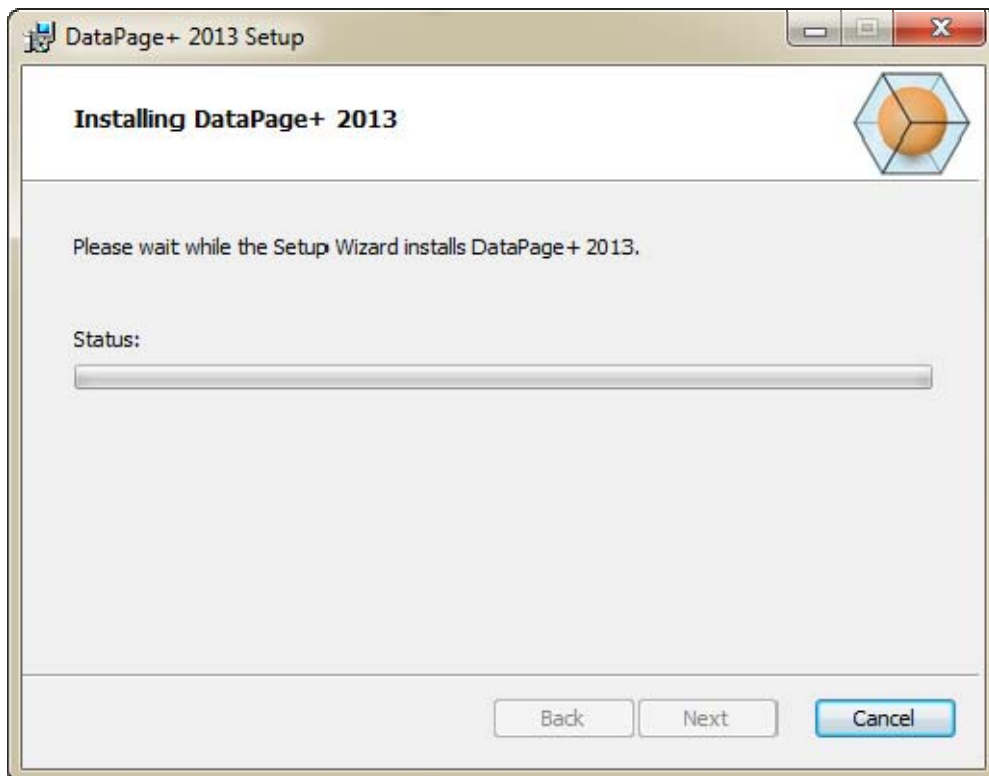


Figure 9 – Installation Screen

Step 5: Finish the Installation

Once DataPage+ finishes installing the needed files and shortcuts, the **Finish** button becomes available. Click **Finish** to exit the wizard:

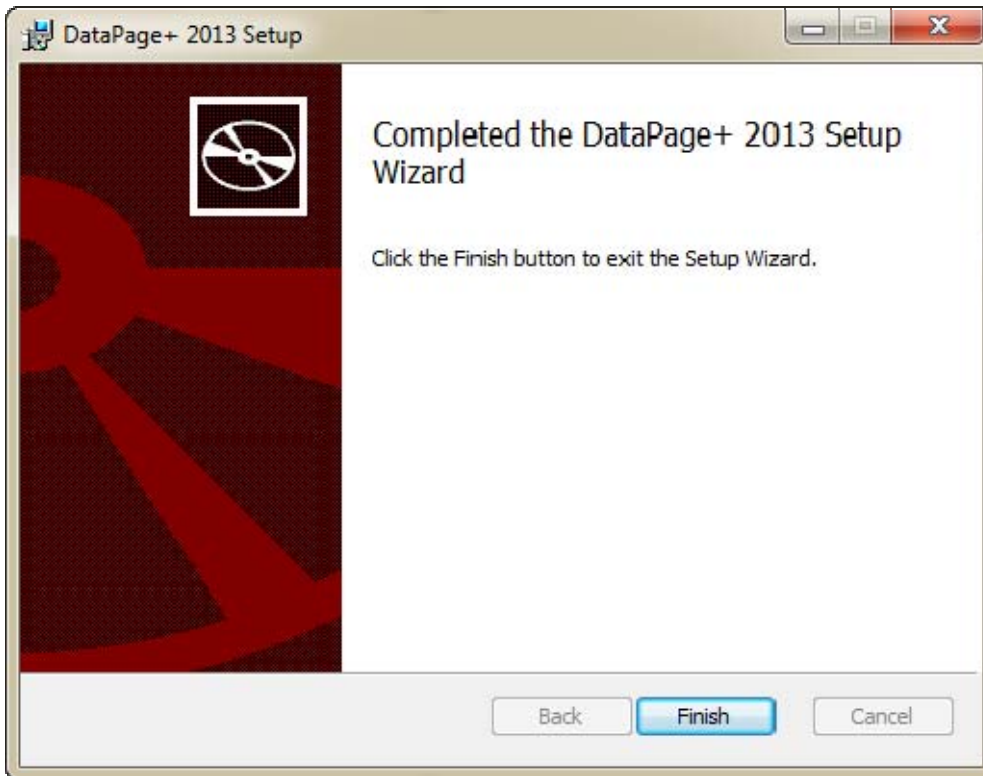


Figure 10 – Complete Installation Screen

After clicking **Finish**, you can access the installed shortcut icons to launch DataPage+.

Step 6: Check the Installed Contents

When you install DataPage+, the software installs files into these default directories, depending on your Windows operating system:

Program Files

Program files are installed to your specified installation directory. These include the executables, tools, xml files, reports, help files, and additional files. The default location is listed below:

Vista/7:	C:\Program Files\Wai\DataPage+ 2013 or C:\Program Files (x86)\WAI\DataPage+ 2013
-----------------	---

Using DataPage+ for the First Time

Overview

This helps you get started using the DataPage+ software for the first time.

Step 1: Start the Software

Once DataPage+ has been installed, launch the application by double clicking on the **DataPage+** icon where your program shortcuts are installed (Figure 13).

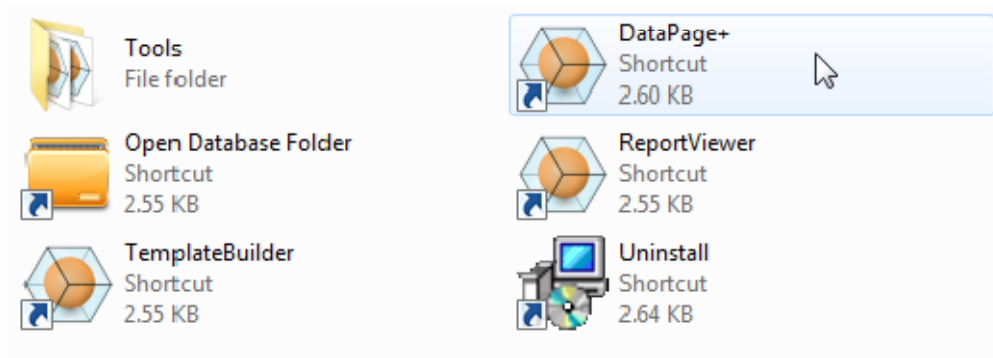


Figure 13 – Program Shortcuts

The software attempts to connect to the Demo database. If all goes well it presents you with a login screen.

Step 2: Follow the Getting Started Guide

If you have problems connecting to the database, or if you are connected to the database but simply need to register or login for the first time, access the "Getting Started Guide" inside the DataPage+ help file:

1. Click the Help button in the top-right of the application window (Figure 14).

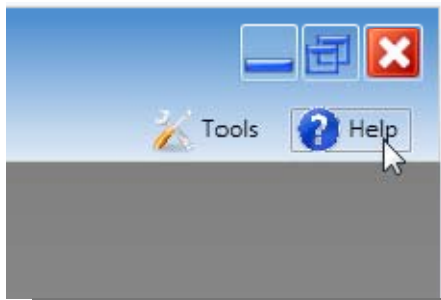


Figure 14 – Help Button

- From the initial Welcome screen on the help file, click on the "Getting Started Guide" link (Figure 15).

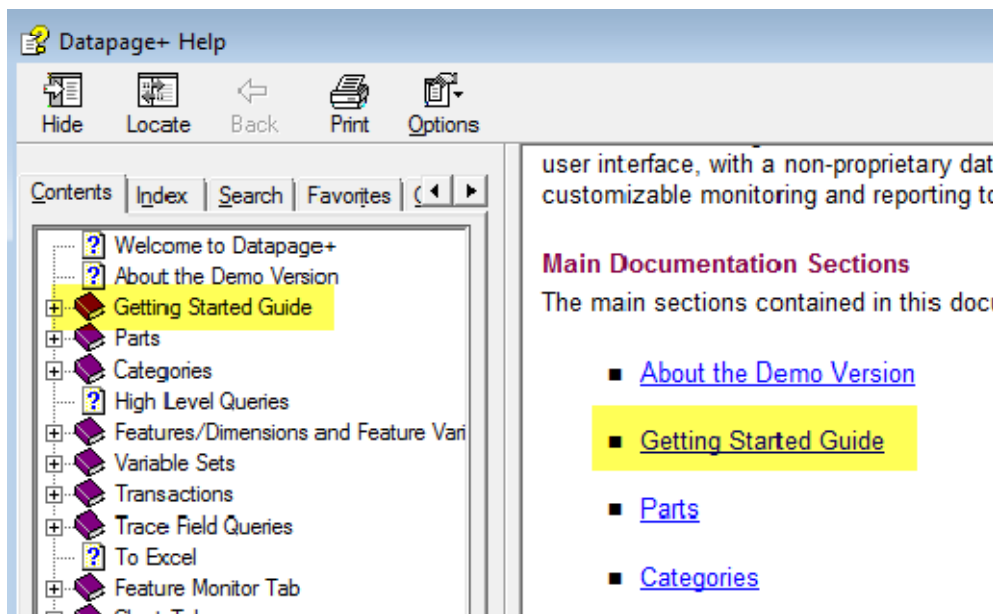


Figure 15 – Accessing the Getting Started Guide

The help file opens the Getting Started Guide. It contains information on the following useful topics for new users:

- Connecting to a Database
- Registering and Logging in
- Importing Existing Statistical Data
- Sending Data from PC-DMIS to DataPage+
- User Interface Overview
- Usage Overview

Troubleshooting the Install

Overview

If you have problems getting DataPage+ or any of the required software components to install or run properly, you may have conflicts from a previous version of Microsoft SQL Server 2005 Express or some other configuration issue.

If so, you may need to perform a manual installation and configuration of the required software components. To do this, consult the PDF setup guides located in the "Manual Installation Instructions" directory of your installation files.